

Introduction

Mabrook Hardware Trading stocks products such as Marine Industrial Valve, High-Pressure Pipe Fittings, and Flanges. We offer all your hardware needs, ranging from pressure pipes to industrial valves. Our Hardware's sales force is trained to provide you with the personal touch you require making it more than just a business transaction. Our clientele service team is dedicated to ensuring your business grows on a continuous basis. Our range of products is built on new and advanced technologies making our clients have a competitive edge within their industry.

Vision

To be the leading supplier of Marine Hardware globally.

Mission

Our mission is to provide durable hardware products to our clients. We aim to be the ideal choice Marine Hardware store for our customers and become the most reliable partner for our suppliers to ensure we achieve our goal of operating globally.

Objective

Our aim seeks to provide our esteemed clients with value for their money, excellence in their operations and innovative products through a combination of a variety of services, merchandise, and an experienced Sales and Customer Service Team.

Values

• *Customer Service*

At Mabrook Hardware we are dedicated to ensuring our customers enjoy our service by putting them first. We believe in serving the client well and appreciate their feedback.

• *Integrity*

We offer products that are sustainable and provide a warranty of 18 months to our customers. We do business honestly and ensure all parties in the business transaction have trust in one another.

• *Quality*

Our priority lies in giving customers value for their money. We do not compromise on quality as we believe the Marine Industry is crucial and we only desire to be known only like the best.

• *Timely Delivery*

Upon successful transaction, Mabrook Hardware provides timely delivery of goods to the respective hardware stores and warehouses as demanded by the client.

About us

• *Our Facilities.*

We have our headquarters in Dubai Middle East. Mabrook Hardware is an independent distributor and trusted distributor of marine hardware in the Middle East. We have sufficient warehouse and storage facilities to handle bulk orders and ensure delivery on time when required. Our dedicated fleet of trucks assists in weekly on-time deliveries at the lowest charges in the industry.

• *Experienced Customer Service*

Mabrook Hardware Sales representatives are highly experienced and knowledgeable of your market, and since they engage in it on a daily basis. They are highly aware of the competition facing your business as an entity and offer business advisory to help you establish strategies useful in targeting the right clientele and adjust your retail prices accordingly. While we do have voice mail, email, a website, and a cell phone, we don't use them as a substitute for engaging with you at a personal level.

• *Customer Satisfaction*

Mabrook Hardware shares in your desire for independent business. Our dedication targets to help our retailers thrive in any competitive market while achieving high sales and profits. Our extensive customer network has been built mainly on referrals which translate to our high levels of customer satisfaction in the business.

CARBON STEEL PIPES ERW (SCH-40 & SCH-80)	(SCH-40 & SCH-80) ERW	مواسير حديد كاربون
CARBON STEEL FITTINGS ERW (SCH-40 & SCH-80)	(SCH-40 & SCH-80) ERW	تركيبات حديد كاربون
CARBON STEEL GATE VALVES (CL-150 & CL-300)	(CL-150 & CL-300)	صمامات بوابة حديد كاربون
CARBON STEEL SHEETS & CHECKERED PLATES		الواح حديد كاربون و صفائح متقلبة
CARBON STEEL PIPES SEAMLESS (SCH-40 & SCH-80)	(SCH-40 & SCH-80) ERW	مواسير حديد كاربون غير ملحوم
CARBON STEEL FITTINGS SEAMLESS (SCH-40 & SCH-80)	(SCH-40 & SCH-80) ERW	تركيبات حديد كاربون غير ملحوم
CARBON STEEL BALL VALVES (CL-150 & CL-300)	(CL-150 & CL-300)	صمامات كرة حديد كاربون
CARBON STEEL TUBES, ANGLE BARS ETC		انابيب حديد كاربون والزوايا والاعمدة و نحوها
FORGED STEEL FLANGES (CL-150, 300 & 600)	(CL-150, 300 & 600)	فلنجات حديد مطروقة
FORGED STEEL GATE VALVES (CL-600 & CL-800)	(CL-600 & CL-800)	صمامات بوابة حديد مطروقة
FORGED STEEL FITTINGS (CL-2000, 3000 & 6000)	(CL-2000, 3000 & 6000)	تركيبات حديد مطروقة
FORGED STEEL BALL VALVES (CL-3000 & CL-6000)	(CL-3000 & CL-6000)	صمامات كرة حديد مطروقة
GALVANIZED PIPES ERW (SCH-20, 30 & 40)	(SCH-20, 30 & 40) ERW	مواسير مجلفنة
GALVANIZED SHEETS & CHECKERED PLATES		الواح مجلفنة و صفائح متقلبة
GALVANIZED THREADED FITTINGS THAILAND		تركيبات مسننة مجلفنة ياباني
GALVANIZED TUBES & ANGLE BARS ETC.		انابيب مجلفنة والزوايا والاعمدة و نحوها
BLACK MALLEABLE FITTINGS THREADED THAILAND		أسنان التركيبات الطيع الاسود ياباني
BLACK MALLEABLE FITTINGS THREADED CRANE UK		أسنان التركيبات الطيع الاسود كرين الولايات المتحدة
CAST IRON PIPE & FITTINGS (HUB & S. HUB)		مواسير الزهرة و تركيباتها (المحوشبة المحور)
CAST IRON GATE VALVES FLANGED CL-150	CL-125	صمامات فلنجات من الزهر
CAST IRON MANHOLE COVERS & CRATINGS		اغطية مناهل الزهر و شحنها
CAST IRON BALL VALVES FLANGED CL-150	CL-125	صمامات كرة من الزهر
STAINLESS STEEL PIPES 316 (SCH-10, 40 & 80)	(SCH-10, 40 & 80)	مواسير حديد ستاينلس ٣١٦
STAINLESS STEEL THREADED FITTINGS (316 & 304)		تركيبات حديد ستاينلس مسننة ٣١٦ و ٣٠٤
STAINLESS STEEL DAIRY TUBES (316 & 304)		انابيب حديد ستاينلس للألبان ٣١٦ و ٣٠٤
STAINLESS STEEL BALL VALVES (CL-600, 800, 1000)	(CL-600, 800, 1000)	صمامات حديد ستاينلس كرة
STAINLESS STEEL PIPES 304 (SCH-10, 40 & 80)	(SCH-10, 40 & 80)	مواسير حديد ستاينلس ٣٠٤
STAINLESS STEEL WELDED FITTINGS 304 (SCH-10, 40)	(SCH-10, 40)	تركيبات حديد ستاينلس ملحومة ٣٠٤
STAINLESS STEEL SHEETS, ANGLE BARS ETC (304 & 316)		الواح حديد ستاينلس والزوايا والاعمدة و نحوها ٣١٦ و ٣٠٤
STAINLESS STEEL GATE VALVES (CL-600, 800, 1000)	(CL-600, 800, 1000)	صمامات حديد ستاينلس بوابة
COPPER PIPES & ALL KINDS OF COPPER FITTINGS		مواسير النحاس و جميع اصناف تركيبات النحاس
COPPER SHEETS & COPPER ANGLE BARS ETC		الواح النحاس وازوايا النحاس والاعمدة و نحوها
BRASS GATE VALVES & BRASS BALL VALVES		صمامات النحاس بوابة و كرة
BRASS FLOAT VALVES & BRASS WATER METERS		صمامات النحاس العوامة و متر الماء النحاسي
BRASS FOOT VALVES & BRASS CHECK VALVES ETC		صمامات النحاس تحتية و صمامات الامان و نحوها
BRASS BIB COCKS & PRESSURE RELIEF VALVES		صمامات نحاس بيب كوك و صمامات معالجة الضغط
BRONZE GATE VALVES & BRONZE BALL VALVES		صمامات البرونز بوابة و كرة
BRONZE CHECK VALVES & D. REGULATING VALVES		صمامات الامان البرونز و تحديد السعة

Figures Based on Austenic Steel																		Shipping	
Nominal Pipe Size in Inches	OD mm	Sch 10	Sch 20	Sch 30	STD	Sch 40	Sch 60	Sch XS	Sch 80	Sch 100	Sch 120	Sch 140	Sch 160	Sch XXS	5S	10S	40S	80S	Vol/mm3
1/8	10.30				1.73	1.73		2.41	2.41							1.24	1.73	2.41	0.0001
					0.37	0.37		0.47	0.47							0.28	0.36	0.48	
1/4	13.70				2.24	2.24		3.02	3.02							1.65	2.24	3.02	0.0002
					0.66	0.63		0.80	0.80							0.51	0.64	0.82	
3/8	17.10				2.31	2.31		3.20	3.20							1.65	2.31	3.20	0.0003
					0.84	0.84		1.10	1.10							0.64	0.86	1.12	
1/2	21.30				2.77	2.77		3.73	3.73				4.78	7.47	1.65	2.11	2.77	3.73	0.0004
					1.27	1.27		1.62	1.62				1.95	2.55	0.82	1.01	1.30	1.65	
3/4	26.70				2.87	2.87		3.91	3.91				5.56	7.82	1.65	2.11	2.87	3.91	0.0007
					1.69	1.69		2.20	2.20				2.9	3.64	1.04	1.31	1.71	2.24	
1	33.40				3.38	3.38		4.55	4.55				6.35	9.09	1.65	2.77	3.38	4.55	0.0011
					2.5	2.5		3.24	3.24				4.24	5.45	1.33	2.13	2.55	3.29	
1-1/4	42.20				3.56	3.56		4.85	4.85				6.35	9.7	1.65	2.77	3.56	4.55	0.0018
					3.39	3.39		4.47	4.47				5.61	7.77	1.68	2.78	3.46	4.56	
1-1/2	48.30				3.68	3.68		5.08	5.08				7.14	10.15	1.65	2.77	3.68	5.08	0.0023
					4.05	4.05		5.41	5.41				7.25	9.56	1.95	3.17	4.13	5.51	
2	60.30				3.91	3.91		5.54	5.54				8.74	11.07	1.65	2.77	3.91	5.54	0.0036
					5.44	5.44		7.48	7.48				11.11	13.44	2.44	4.01	5.54	7.63	
2-1/2	73.00				5.16	5.16		7.01	7.01				9.53	14.02	2.11	3.05	5.16	7.01	0.0053
					8.63	8.63		11.41	11.41				14.92	20.39	3.77	5.36	8.81	11.64	
3	88.90				5.49	5.49		7.62	7.62				11.13	15.24	2.11	3.05	5.49	7.62	0.0079
					11.29	11.29		15.27	15.27				21.35	27.68	4.6	6.59	11.52	15.59	
3-1/2	101.60				5.74	5.74		8.08	8.08				-	-	2.11	3.05	5.74	8.08	0.0103
					13.57	13.57		18.63	18.63						5.29	7.55	13.84	19.01	
4	114.30				6.02	6.02		8.56	8.56		11.13		13.49	17.12	2.11	3.05	6.08	8.56	0.0130
					16.07	16.07		22.32	22.32		28.32		33.54	41.03	5.96	8.52	16.40	22.77	
5.00	141.30				6.55	6.55		9.53	9.53		12.70		15.88	19.05	2.77	3.40	6.55	9.53	0.02
					21.77	21.77		30.97	30.97		40.28		49.11	57.43	9.67	11.82	22.20	31.59	
6.00	168.30				7.11	7.11		10.97	10.97		14.27		18.26	21.95	2.77	3.40	7.11	10.97	0.03
					28.26	28.26		42.56	42.56		54.20		67.56	79.22	11.55	14.13	28.83	43.42	
8.00	219.10		6.35	7.04	8.18	8.18	10.31	12.70	12.70	15.08	18.26	20.62	23.01	22.23	2.77	3.76	8.18	12.70	0.05
			33.31	36.81	42.55	42.55	53.08	64.64	64.64	75.92	90.44	100.92	111.27	107.92	15.09	20.37	43.39	65.95	
10.00	273.10		6.35	7.80	9.27	9.27	12.70	12.70	15.09	18.26	21.44	25.40	28.58	25.40	3.40	4.19	9.27	12.70	0.07
			41.77	51.03	60.31	60.31	81.55	81.55	96.01	114.75	133.06	155.15	172.33	155.15	23.08	28.34	64.52	83.19	
12.00	323.90		6.35	8.38	9.53	10.31	14.27	12.70	17.48	21.44	25.40	28.58	33.32	25.40	3.96	4.57	9.52	12.70	0.10
			49.73	65.20	73.88	79.73	108.96	97.46	132.08	159.91	186.97	208.14	238.76	186.97	31.89	36.73	75.32	99.43	
14.00	355.60		6.35	7.92	9.53	9.53	11.13	15.09	12.70	19.05	23.83	27.79	31.75	35.71		3.96	4.78		0.13
			54.69	67.90	81.33	81.33	94.55	126.71	107.39	158.10	194.96	224.65	253.56	281.70		35.06	42.14		
16.00	406.40		6.35	7.92	9.53	9.53	12.70	16.66	12.70	21.44	26.19	30.96	36.53	40.49		4.19	4.78		0.17
			62.64	77.83	93.27	93.27	123.30	160.12	123.30	203.53	245.56	286.64	333.19	365.35		42.41	48.26		
18.00	457.00		6.35	7.92	11.13	9.53	14.27	19.05	12.70	23.88	29.36	34.93	39.67	45.24		4.19	4.78		0.21
			70.57	87.71	122.38	105.16	155.80	205.74	139.15	254.55	309.62	363.56	408.26	459.37		47.77	54.36		
20.00	508.00		6.35	9.53	12.70	9.53	15.09	20.62	12.70	26.19	32.54	38.10	44.45	50.01		4.78	5.54		0.26
			78.55	117.15	155.12	117.15	183.42	247.83	155.12	311.17	391.53	441.49	508.11	564.61		60.46	70.00		
22.00	559.00		6.35	9.53	12.70	9.53	-	22.23	12.70	28.58	34.93	41.28	47.63	53.98		4.78	5.54		0.31
			86.54	129.13	171.09	129.13		294.25	171.09	373.83	451.42	527.02	600.63	672.26		66.67	77.06		
24.00	610.00		6.35	9.53	14.27	9.53	17.48	24.61	12.70	30.96	38.89	46.02	52.37	59.54		5.54	6.35		0.37
			94.53	141.12	209.64	141.12	255.41	355.26	187.06	442.08	547.71	640.03	720.15	808.22		84.16	96.37		
26.00	660.00		7.92	12.70	-	9.53	-		12.70										0.44
			127.36	202.72		152.87			202.72										
28.00	711.00		7.92	12.70	15.88	9.53	-		12.70										0.51
			137.32	218.69	271.21	164.85			218.69										
30.00	762.00		7.92	12.70	15.88	9.53	-		12.70							6.35	7.92		0.58
			147.28	234.67	292.18	176.84			234.67							120.72	150.36		
32.00	813.00		7.92	12.70	15.88	9.53	17.48		12.70										0.660
			157.24	250.64	312.15	188.82	342.91		250.64										
34.00	864.00		7.92	12.70	15.88	9.53	17.48		12.70										0.75
			167.20	266.61	332.12	200.31	364.90		266.61										
36.00	914.00		7.92	12.70	15.88	9.53	19.05		12.70										0.84
			176.96	282.27	351.70	212.56	420.42		282.27										
38.00	965.00				9.53				12.70										0.93
					224.54				298.24										
40.00	1016.00				9.53				12.70										1.03
					236.53				314.22										
42.00	1067.00				9.53				12.70										1.14
					248.52				330.19										
44.00	1118.00				9.53				12.70										1.25
						260.50			346.16										
46.00	1168.00				9.53				12.70										1.36
					272.25				351.82										
48	1219.00				9.53				12.70										1.485
					284.24				377.79										

● Wall thickness ● Weight kg. / Mtr.

CAST STEEL VALVES



C.S Gate Valve WCB 216, CL150, CL300 F/T
From 1/2" to 14"



M.S. Forged Steel Gate Valve 800#
From 1/2" to 2" SW & NPT



C.S Globe Valve WCB 216, CL150, CL300 F/T
From 1/2" to 12"



M.S Forged Steel 800# Globe Valve
From 1/2" to 2" SW & NPT



C.S. Check Valve WCB 216, CL150, CL300 F/T
From 1/2" to 12"



C.S. Wafer Type Check Valve CL150
From 1/2" to 12"



M.S. Forged Steel Check Valve 800#
From 1/2" to 2" NPT & SW



C.S Ball Valve WCB 216, 2PC Body Design
CL150 F/T From 1/2" to 12"



C.S Ball Valve WCB 216, 3PC Body Design
CL150 F/T From 1/2" to 6"



C.S Ball Valve XDS 800WOG
From 1/4" to 4" NPT & BSPT



C.S F.S Ball Valve 3PC 1000 #
From 1/2" to 4" NPT & BSPT



C.S Ball Valve 2PC 3000WOG
From 1/2" to 2" NPT



C.S Ball Valve 3PC Design 3000#
From 1/4" to 2" NPT



C.S Ball Valve Hydraulic 6000#
From 1/4" to 2" NPT

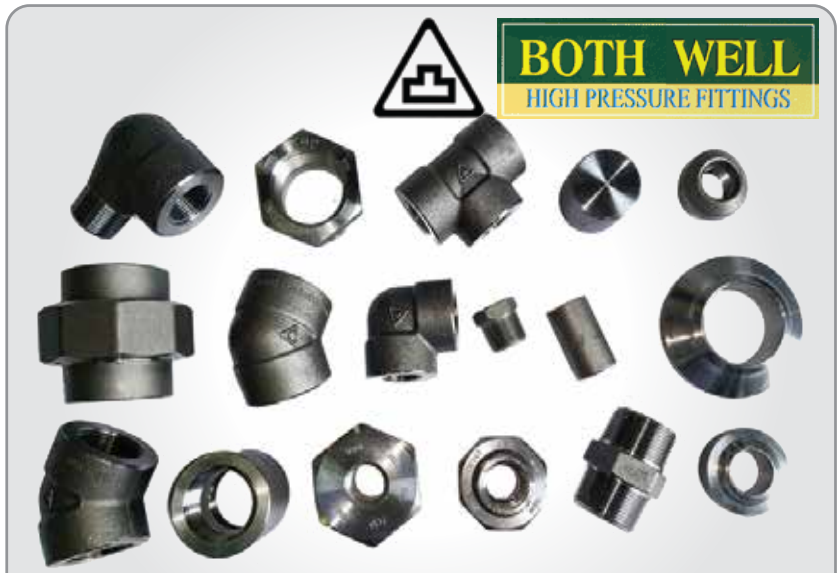


C.S Y Strainer WCB 216, CL 150 F/T
From 1.1/2" to 8"

M.S. FORGED & LOW PRESSURE & B/W FITTINGS



M.S Pipe Fittings L/P 1000#
From 1/4" to 2" BSPT



M.S Forged Pipe Fittings A105 2000#, 3000#, 6000#
From 1/8" to 4" NPT & SW



M.S Pipes, Tubing SMLS & ERW SCH STD SCH40, SCH80,
SCH XXS, SCH XS, SCH 160 From 1/4" to 24" 6mtr. Or DRL Lengths



M.S B/W Pipe Fittings SMLS WBP 234 SCH 40,
SCH80, SCH160 Tubing From 1/4" to 24"



M.S Swage Nipples 1000# & 3000#
From 3/4" X 1/2" to 8" X 6" NPT



M.S Long Nipples & Close Nipples A105 SMLS, ERW
SCH40, SCH80, SCH160 Size: 1/4" to 6" X 8" NPT & BSPT



Stainless Steel Gate Valve F/T
CL150 From 1/2" to 10"



S.S. Low Pressure Gate Valve 200#
From 1/2" to 4" NPT & BSPT



S.S. Forged Steel Gate Valve
From 1/2" to 2" SW & NPT



S.S. Globe Valve CL150 CF8 F/T
From 1/2" to 6"



S.S. Low Pressure Globe Valve 200#
From 1/2" to 4" NPT & BSPT



S.S. Forged Steel 800# Globe
Valve From 1/2" to 2" SW & NPT



S.S. Swing Check Valve CL150 F/T
From 1/2" to 10"



S.S. Low Pressure Swing Check Valve
From 1/2" to 4" NPT & BSPT



S.S. Forged Steel Check Valve
From 1/2" to 2" NPT & SW

S.S. VALVES



S.S. Non Slam Disc Check Valve
From 1/2" to 6" CF8



S.S. Waffer Type Check Valve
CL150 From 1/2" to 12"



S.S. Ball Valve XDS 800WOG
From 1/4" to 4" NPT & BSPT



S.S. Ball Valve HEX Body R/B
1PC Body Design
1000WOG CF8M
From 1/4" to 2" NPT



S.S. Ball Valve 2PC Body Design
1000WOG F/B CF8M
From 1/4" to 4" NPT & BSPT



S.S. Ball Valve 3PC Body Design
1000WOG F/B CF8M
From 1/4" to 4" NPT,
BSPT, BW & SW



S.S. Ball Valve 2PC Body Design
3000WOG F/B CF8M
From 1/4" to 2" NPT



S.S. Ball Valve 2PC Body Design
PN16, CL150 F/T CF8M
From 1/2" to 10"



S.S.Y Strainer 200#
From 1/2" to 4" NPT & BSPT



S.S.Y Strainer CL150 F/T
From 1/2" to 6" CF8

S.S. FORGED & LOW PRESSURE & B/W FITTINGS



S.S Low Pressure Cl150 316 Pipe Fittings
From 1/8" to 4" NPT & BSPT



BOTH WELL
HIGH PRESSURE FITTINGS



S.S Forged Steel Pipe Fittings A182 316L 3000#
From 1/4" to 4" NPT & SW



S.S BW Pipe Fittings ASTM 403 316L SMLS & ERW
SCH10, SCH40, SCH 80 From 1/2" to 24"



S.S Pipes & Tubing SMLS ERW ASTM A182 316L, 304L
SCH10, SCH40, SCH 80 6 Mtrs 1/8" to 12"



S.S Long Pipe Nipples & Close Nipples ERW &
SMLS A182 316L SCH10, SCH40, SCH 80
From 1/4" to 4" x 6" Long 1/4" x 8" - 8" x 8" NPT & BSPT

INSTRUMENTATION FITTINGS & PRESSURE GAS



S.S Com Fittings Nut & Ferrule Type
From 6M to 12M & 1/4" to 1/2"



Pressure Gauges Full S.S. Body & Part Liquid Filled - 4" Dial & 1/2" Bottom Connection
2.1/2" Dial & 1/4" Bottom Connection - From 0 to 15000 PSI

CAST IRON VALVES



C.I Gate Valve Resilient Sealing
PN16 F/T From 1" to 24"



C.I Gate Valve Brass Seating CL 150 F/T
From 1.1/2" to 12"



C.I Globe Valve PN16, F/T
From 1/2" to 12"



C.I Globe Valve CL150 F/T
From 1/2" to 12"



C.I Swing Check Valve PN16 F/T
From 1" to 12"



C.I Swing Check Valve CL150 F/T
From 1.1/2" to 12"



C.I. Dual Check Valve PN16
From 1.1/2" to 16"



C.I Ball Valve 2PC Design
CL150 F/T From 1/4" to 8"



C.I Ball Valve PN16 2PC Design F/T
From 1/2" to 8"



C.I.Y Strainer PN16 F/T
From 1.1/2" to 12"



C.I.Y Strainer CL150 F/T
From 1.1/2" to 8"

BIS PIPE FITTINGS



G.I Elbow 90° 1/4" to 4"
Bis Pipe Fittings



G.I, ST. Elbow 90° 1/4" to 4"
Bis Pipe Fittings



G.I Elbow 45° 1/4" to 4"
Bis Pipe Fittings



G.I TEE 1/4" to 4"
Bis Pipe Fittings



G.I HEY Nipple 1/4" to 4"
Bis Pipe Fittings



G.I Plug 1/4" to 4"
Bis Pipe Fittings



G.I CAP 1/4" to 4"
Bis Pipe Fittings



G.I Union 1/4" to 4"
Bis Pipe Fittings

GROOVED FITTINGS



Grooved Coupling



Grooved Coupling



Grooved Flange



Grooved Elbow 45°



Grooved Elbow 90°



Grooved Tee



Grooved Reducer Socket



Grooved Mechanical Tee

BUTTERFLY VALVES



C.I Butterfly Valve C.I Body Ductile Iron Disc
Lock & Lever Type From 1.1/2" to 12"



C.I. Butterfly Valve C.I Body Stainless Steel Disc
Lock & Lever Type From 1.1/2" to 12"



C.I Butterfly Valve C.I Body Ductile Iron Disc
Gear Type CL150 From 2" to 24"



C.I Butterfly Valve C.I Body Ductile Iron Disc
Lug Type PN16 & CL150 From 1.1/2" to 12"



C.I Butterfly Valve C.I Body Stainless Steel Disc
Lug Type PN16 & CL150 From 1.1/2" to 12"

BRONZE & BRASS VALVES



Bronze Gate Valve
From 1/4" to 4" NPT & BSPT



Bronze Gate Valve Undrilled F/T
From 1/2" to 4"



Bronze Globe Valve
From 1/4" to 4" NPT & BSPT



Bronze Globe Valve Undrilled F/T
From 1/2" to 4"



Bronze Check Valve Swing Type
From 1/2" to 4" NPT & BSPT



Bronze Check Valve Lift Type
From 1/2" to 2" NPT



Bronze Spring Check Valve Vertical
From 1/2" to 4" NPT & BSPT



Bronze Ball Valve 600WOG
From 1/4" to 2" NPT

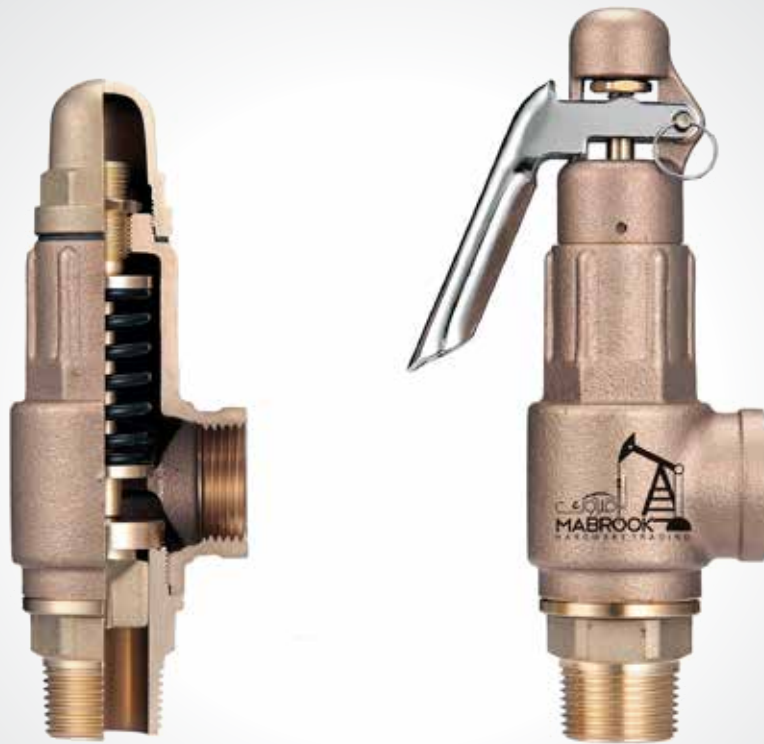


Brass Ball Valve 600WOG
From 1/4" & 4" NPT & BSPT



Bronze Y Strainer
From 1/2" to 2" NPT

BRONZE SAFETY VALVES



Bronze Safety Valves with & without Lever 20 Bar
From 1/2" to 2" NPT



Bronze Safety Valves with & without Lever 10 Bar
From 1/2" to 2" NPT

S.S. & M.S. FLANGES FORGING & CASTING



S.S Flanges A182, 316L SORF. SWRF. WNRF, Blind Screwed: PN16, CL150, CL300, CL600, 5K, 10K, 16K SCH 10, SCH 40, SCH 80 From 1/2" to 24"



M.S Flanges A105, SORF, SWRF, WNRF, Blind, Screwed, Forging & Casting A105, PN10, PN16, PN20, PN25, CL150, CL300, CL600, CL900, CL1500, CL2500, 5K, 10K, 16K, Neck: SCH40, SCH80, SCH160, From 1/2" to any 24"

CHICAGO COUPLINGS & FITTINGS

G.I Chicago Hose End
From 1/4" to 2"



G.I Chicago Male End
From 1/4" to 1"



G.I Chicago Female End
From 1/4" to 2"



G.I Chicago 3 Way



Safety Pin



Gasket



G.I King Nipple From 1/2" to 12" NPT & BSPT



G.I Hose Mendor From 1/2" to 8"



Double Bolt Clamp From SL22 to SL1275

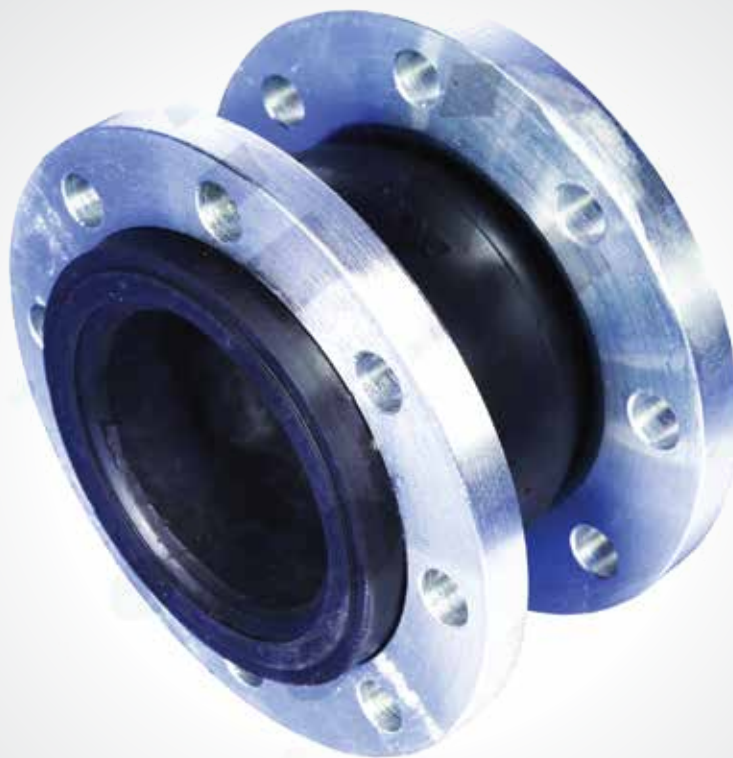


Four Bolt Clamp Size: 1/2" to 3"

UNION & FLEXIBLE CONNECTORS



G.I Flexible Union Connector
From 1/2" to 3"



G.I Flexible Flange Connector Single
Below CL150 & PN16 From 1" to 24"

UNIVERSAL COUPLINGS & FLANGE ADAPTERS



Universal Pipe Joining Coupling
Size: From 2" to 24"



VJ Pipe Joining Coupling
Size: From 2" to 24"



Universal Flange Adapters PN16
Size: From 2" to 24"

QUICK COUPLINGS



Bouver Couplings From 2" to 8"



Miller Couplings From 2" to 8"



Camlock Couplings - Aluminium / Brass / Stainless Steel
From 1/2" to 6" NPT & BSPT

LUDECKE



Brass QRC Hose Body
Size: 1/4" , 5/16" , 3/8" , 10MM , 1/2"



Brass QRC Male Body
Size: 1/4" , 3/8" & 1/2"



Brass QRC Hose Plug
Size: 1/4" , 5/16" , 3/8" , 10MM , 1/2"



Brass QRC Female Plug
Size: 1/4" , 3/8" & 1/2"



Brass QRC Female Body
Size: 1/4" , 3/8" & 1/2"



Brass QRC Male Plug
Size: 1/4" , 3/8" & 1/2"



Double Bolt Clamp
Size: SL 29 to SL 675

GASKETS & CAF & CANG SHEETS



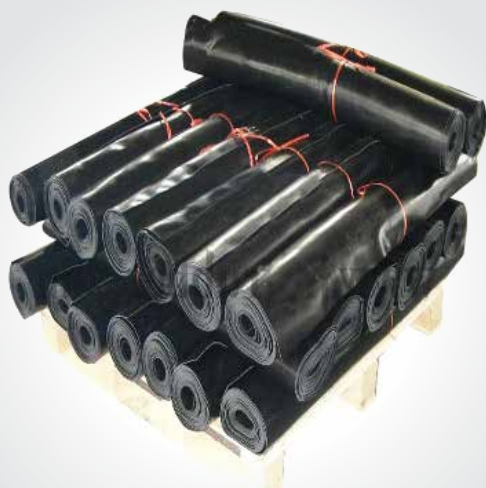
CAF, CNAF, Rubber Gasket Rings Type & Full Face
1.5mm, 3mm, CL150, CL300, CL600,
PN16, PN20, PN25, PN40 From 1/2" to Any Size



CAF CNAF, Metallic & Non Metallic Gasket Sheets
1.5Mtr. x 1.5Mtr, 1mm To 6mm



Spiral Wound Gasket Graphite Filled, CAF Filled, Teflon Filled
CL150, CL300, CL600, CL900, CL1500 From 1/2" to 24"



Neoprene Rubber Sheets 1.2Mtr. x 10Mtr.
From 1mm To 16mm



Graphited Gland Packing
From 6mm To 25 mm

HAMMER UNIONS & PARTS

HAMMER UNIONS

Fig 100 From 1" to 10"
Threaded Low Pressure

Fig 200 From 1" to 10"
Threaded Low Pressure

Fig 206 From 1" to 10"
Threaded Low Pressure

Fig 602 From 1" to 4"
Threaded High Pressure

Fig 1002 From 1" to 4"
Threaded High Pressure

Fig 1502 From 1" to 4"
Threaded High Pressure

Fig 602 From 1" to 4"
Butt Weld High Pressure

Fig 1002 From 1" to 4"
Butt Weld High Pressure

Fig 1502 From 1" to 4"
Butt Weld High Pressure

Fig 100 From 1" to 10"
Butt Weld Low Pressure

Fig 200 From 2" to 10"
Butt Weld Low Pressure

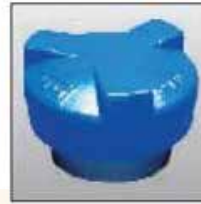
Fig 206 From 2" to 10"
Butt Weld Low Pressure

BLANKING UNIONS

Fig 100 From 1" to 4"
Fig 200 From 1" to 4"

Fig 206 From 1" to 4"
Fig 602 From 1" to 4"

Fig 1002 From 1" to 4"
Fig 1502 From 1" to 4"



HOSE CONNECTORS

Fig 100 From 1" to 1.1/2" , 2" & 4"

Fig 200 From 1" to 1.1/2" , 2" & 4"

Fig 206 From 1" to 1.1/2" , 2" & 4"

Fig 602 From 1" to 1.1/2" , 2" & 4"

Fig 1002 From 1" to 1.1/2" , 2" & 4"

Fig 1502 From 1" to 1.1/2" , 2" & 4"

SPARES

Retainer Ring Size 2" , 3" & 4"

Change Over Adaptors Size 1" to 4"

Thread Protector

Segment Size 2" , 3" & 4"

Change Over Adaptors, Swivel Joints

Plug Valves Pup Joints, Integral Unions,
Emergency Relief Valves